

(DDS)

(DDS.MS)

*

: *

jvejdani@yahoo.com:

/ / : / / :

Developmental Defect of Enamel (DDE)

SPSS

Chi-Square

% / .

(% /) :

/ / / :

.()

()

.()

.()

()

.()

% /

.()

.()

% /

()

()

%

Bunon

()

.()

% /

()

()

. () % /

()

()

().

(DDE Index)

cross-

FDI

(sectional)

[1R]Comment: کنترل نموده و به عبارت کامل آن اشاره فرمایید.

(

)

)

(

SPSS

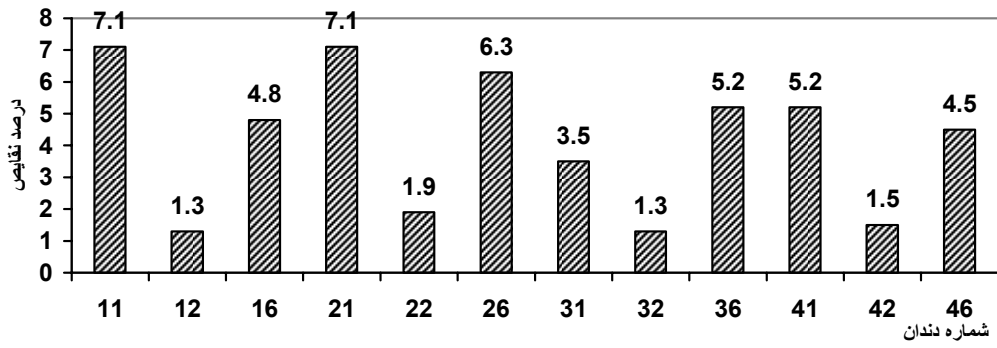
%

%

()

....

(% /)
 % /
 % /
 (%)
 (% /)
 (% /)
 (% /)
 (% /)
 (% /)
 (% /)
 (% /)
 (p > /)
 (/)
 (/)
 (/)
 (/)
 (/)
 (/)



p-value	%				
/	/ /	/			
/	/ /	/			
	/	/			
/	/ /	/			

() Weerheijm % / ()
% / () Jasulaityte %
% / () Preusser %
% /
() /
% DDE) ()
() Mackay % () Arnadottir ()
() % /
% / % / ()
% /
% /

()
()
()

% / (/ ppm)

[Redacted]

% /

[TR]Comment
منظور، فلوراید موجود در چه چیزی است؟
[TR]Comment
منظور، فلوراید موجود در چه چیزی است؟

()

% /

()

%

()

() Arnadottir

()

(/)

% /

Jasulaityte

()

%

()

%

()

() Jalvic

() Tapias ()

().

() Suckling .()

()

() Kellerhoff

()

)

% /

() (

() Arnadottir

)

(

() Jalevic

1. Pinkham JR. Pediatric Dentistry. Infancy through Adolescence.4th ed. New york; Elsevier, 2005.

2. Wozniak K, Lagoocka R, Lipski M,Tomasik M, Buczkowska-Radlinska,Chlubek D. Changes In Developmental Defects Of Dental Enamel Within The Space Of Centuries. Durham Anthropology Journal 2005; 12:1-7.

3. Jalevic B, Noren JG, Klingberg G, Et Al. Etiologic Factors Influencing the Prevalence of Demarcated Opacities In Permanent First Molars In A Group of Swedish Children. Eur J Oral Sci 2001; 109:230-234.

4. Gandehari M. Prevalence of Enamel Defects and Associating Factors in 12-Year-Old-Children In Tehran. Dental Journal Shahid Beheshti University

- of Medical Sciences 1996; 26:48-55. [Text In Persian]
5. Mahmodian J, Kousari A, Mortazavi Sh. The Prevalence of Enamel Defects In Students 7-12 Years of Age In Isfahan. *Journal of Dentistry. Tehran University Of Medical Sciences* 2000;13:43-51. [Text In Persian]
 6. Mehran M, Jalayer Naderi N, Hosseini M. Prevalence Of Enamel Defects And Associating Factors In Permanent Incisors And First Molars In 8-9 Year-Old Children In Tehran In 2003. *The Journal Of Islamic Dental Association Of IRAN* 2003; 17:114-120. [Text In Persian]
 7. Eskandari M, Khosusi Sani AR. Survey of Development Defect of Enamel Defects Incidence in 11-13 Years-Old-Students In Rasht. *Dissertation of General Dentistry of Dental School of Guilan University of Medical Science* 2003. [Text in Persian]
 8. Dummer PM, Kingdon A, Kingdon R. Prevalence And Distribution By Tooth Type And Surface Of Developmental Defects Of Dental Enamel In A Group Of 15-To 16-Year-Old Children In South Wales. *Community Dent Health* 1990; 7:369-77.
 9. Arnadottir IB, Sigurjons H, Holbrook WP. Enamel Opacities In 8-Year-Old Icelandic Children In Relation To Their Medical History As Infants. *Community Dent Health* 2005; 22:279-81.
 10. Jasulaityte L, Veerkamp JS, Weerheijm KL. Molar Incisor Hypomineralization: Review And Prevalence Data From The Study Of Primary School Children In Kaunas/Lithuania. *Eur Arch Paediatr Dent* 2007; 8:87-94.
 11. Afshar H, Tabari R. The Prevalence of Hypoplasia and Hypocalcification of Central Incisors And First Permanent Molars In Primary School Children In Tehran. *Dissertation of General Dentistry of Dental School of Tehran University of Medical Science* 1994. [Text in Persian]
 12. Jalevik B. Enamel Hypo Mineralization In Permanent First Molars. A Clinical, Histo-Morphological And Biochemical Study. *Swed Dent J Suppl* 2001; 149:1-86.
 13. Weerheijm KL, Groen HJ, Beentjes VE, Poorterman JH. Prevalence Of Cheese Molars In Eleven-Year-Old Dutch Children. *J Dent Child* 2001; 68:259-62.
 14. Preusser SE, Ferring V, Wleklinski C. Prevalence And Severity Of Molar Incisor Hypomineralization In A Region Of Germany-A Brief Communication. *J Public Health Dent* 2007; 67:148-50.
 15. Weerheijm KL, Mejare I. Molar Incisor Hypomineralization: A Questionnaire Inventory Of Its Occurrence In Member Countries Of The European Academy Of Paediatric Dentistry. *International Journal Of Paediatric Dentistry* 2003; 13:411-416.
 16. Mackay TD, Thomson WM. Enamel Defects And Dental Caries Among Southland Children. *N Z Dent J* 2005; 101:35-43.
 17. Nozaka K, Sato T, Mukaida T, Et Al. Clinical Study Of Enamel Hypoplasia And Its Causes. 2. Permanent Teeth. *Shoni Shikagaku Zasshi* 1990; 28:579-99.
 18. Daneshkazemi AR, Davari A. Assessment Of DMFT And Enamel Hypoplasia Among Junior High School Children In Iran. *J Contemp Dent Pract* 2005; 6:085-092.
 19. Kellerhoff NM, Lussi A. ["Molar-Incisor Hypomineralization"]. *Schweiz Monatsschr Zahnmed* 2004; 114:243-53.
 20. Tapias MA, Gil A, Jimenez R, Et Al. Factors Associated With Dental Enamel Defects In The First Molar In A Population Of Children. *Aten Primaria* 2001; 27:166-71.
 21. Suckling GW, Herbison GP, Brown RH. Etiological Factors Influencing The Prevalence Of Developmental Defects Of Dental Enamel In Nine-Year-Old New Zealand Children Participating In A Health And Development Study. *J Dent Res* 1987; 66:1466-9.
 22. Vejdani J, Zahiri Z, Emami A. Evaluation of the Relationship Between the Type of Delivery and Enamel Defects of the First Permanent Molars. *Dissertation of General Dentistry of Dental School of Guilan University of Medical Sciences*. [Text in Persian]

Prevalence of Enamel Defects and Associating Factors in Permanent Incisors and First Molars in 8-9 years-old Children

*Vejdani J. (DDS. MS.)¹- Kaboodan M.(DDS)¹

*Corresponding Address: Department of Pediatric Dentistry, Faculty of Dentistry, Guilan University of Medical Sciences, Rasht, IRAN
E-mail: jvejdani@yahoo.com

Received: 22/Dec/2009 Accepted: 27/Feb/2010

Abstract

Introduction: Enamel developmental defects may be classified as heritable or environmentally induced defects. Incisors and molars are usually involved. The affected molars create problems for the patients due to hypersensitivity and caries susceptibility and often require extensive treatment. Many studies were performed to determine the prevalence of enamel defects and conflicted results have been obtained.

Objective: Determine the prevalence of enamel defects and associating factors in permanent incisors and first molars in 8-9 year-old children of Rasht in 2007.

Materials and Methods: This was a descriptive and cross-sectional study. The sample consisted of 538 students aged 8-9 years-old who were randomly selected from 16 schools in Rasht. The Developmental Defects of Enamel (DDE) index was used to assess permanent incisors and first molars, which were dried prior to examination and a light was used for evaluation. A questionnaire about possible etiological factors of enamel defects were sent to parents of children. Data were analyzed with SPSS software by chi-square test. Multivariate analyses were performed using logistic regression analysis.

Results: 126(23.4%) of children had enamel defects in at least one tooth. 12.8 % had at least one affected molar. White/Cream opacity was the most common type of enamel defect. Maxillary central incisors were the most commonly affected tooth.

Mother's diseases during the last trimester, urinary tract infections, diarrhea & vomiting and high-fever diseases during the first 5 yrs of life showed a high association with enamel defects.

Conclusion: It is necessary to inform parents about the prevalence and etiology of the enamel defects by gynecologists, pediatricians and dentists.

Key words: Child/ Dental Enamel/ Incisor/ Molar

Journal of Guilan University of Medical Sciences, No: 73, Pages: 13-19